

# The Critical Role of Social and Behavior Change across the Service Delivery Continuum



Thursday, June 8, 2017  
9:00 am - 11:00 am EDT

# Agenda

<b>Welcome</b>	<b>Kirsten Böse</b> , Project Director, HC3
<b>Opening Remarks</b>	<b>Koki Agarwal</b> , Project Director, Maternal and Child Survival Program
<b>Introducing the Circle of Care: A Model for Integrating Social and Behavior Change (SBC) along the Service Delivery Continuum</b>	<b>Lynn Van Lith</b> , HIV Team Lead, HC3
<b>Expert Panel Discussion</b>	Moderator: <b>Lynn Van Lith</b> , HC3 <b>Erin Mielke</b> , USAID <b>Patrick Devos</b> , HC3 Mozambique <b>Elizabeth Arlotti-Parish</b> , EngenderHealth <b>Moji Odeku</b> , Johns Hopkins Center for Communication Programs

# Welcome

Kirsten Böse, MHS

Project Director, Health Communication Capacity Collaborative



# Opening Remarks

Koki Agarwal, MD, MPH, DrPH

Project Director, Maternal and Child Survival Program



# Introducing the Circle of Care: A Model for Integrating Social and Behavior Change (SBC) along the Service Delivery Continuum

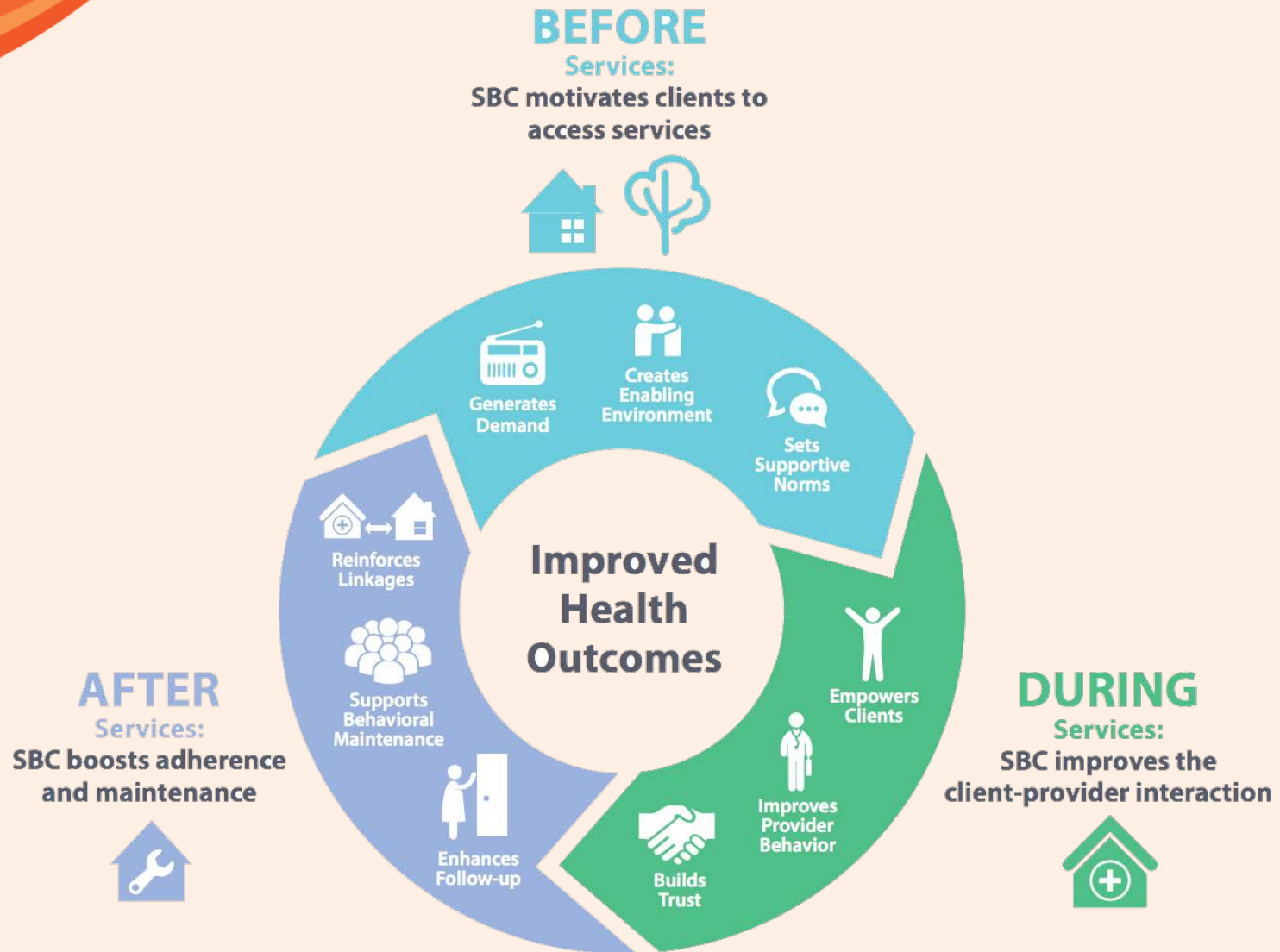
**Lynn Van Lith, MPA**

HIV/AIDS Team Lead, Health Communication Capacity Collaborative





# Circle of Care Model



Can be accessed: <https://healthcommcapacity.org/hc3-project-materials/>

# Expert Panel Discussion

Moderator: **Lynn Van Lith, MPA**  
HIV/AIDS Team Lead, Health Communication Capacity Collaborative



**Erin Mielke, MPH**  
Reproductive Health  
Senior Technical  
Advisor, USAID



**Elizabeth Arlotti-Parish, MA**  
Technical Advisor  
Sexual and Reproductive  
Health and Rights and  
SBC, EngenderHealth



**Patrick Devos, MPHIL**  
Mozambique Country  
Director, Health  
Communication  
Capacity Collaborative



**Mojisola Odeku, MBBS, MPH**  
Chief of Party  
Nigerian Urban Reproductive  
Health II (NURHI2) Project

# Closing Remarks

Rachel Marcus, Public Health Advisor, USAID





## Continue the Conversation:



# Springboard

for Health Communication Professionals

You must be a registered member to post – to register, [click here](#).

<https://healthcomspringboard.org/discussions/discussion/capacity-strengthening/sbcc-capacity-strengthening/the-critical-role-of-sbc-across-the-service-delivery-continuum/>